

MOBILE DATA COLLECTION AND WORKFLOW MANAGEMENT

... one solution, many applications



Streamline forms

Accelerate collection

Standardize results



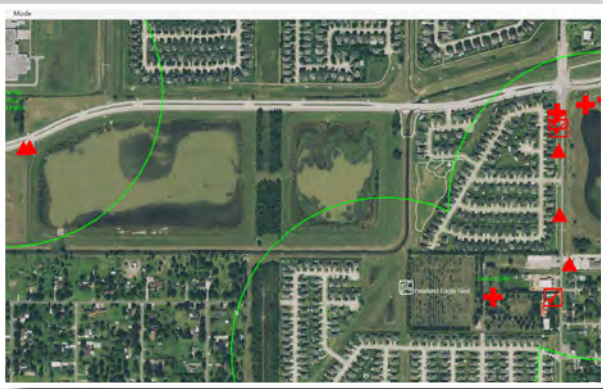
Customize Asset Data Collection

- Transmission
- Distribution
- Substation



- Accurately map, inventory, inspect and maintain field assets
- Match field forms to business rules and designed workflows
- Comprehensive platform; integrates with *your* existing GIS and IT
- Integrates with lasers, line locators, RFID readers, barcode sensors, external GPS
- Field data collection with unmatched speed, accuracy and data integrity
- Increase field productivity, reduce error, eliminate delay in data delivery
- Robust configuration - no code or custom development
- GIS-based, relational database engine
- Supports on-the-fly QA/QC and reduces error at point of collection

EDM INTERNATIONAL, INC.

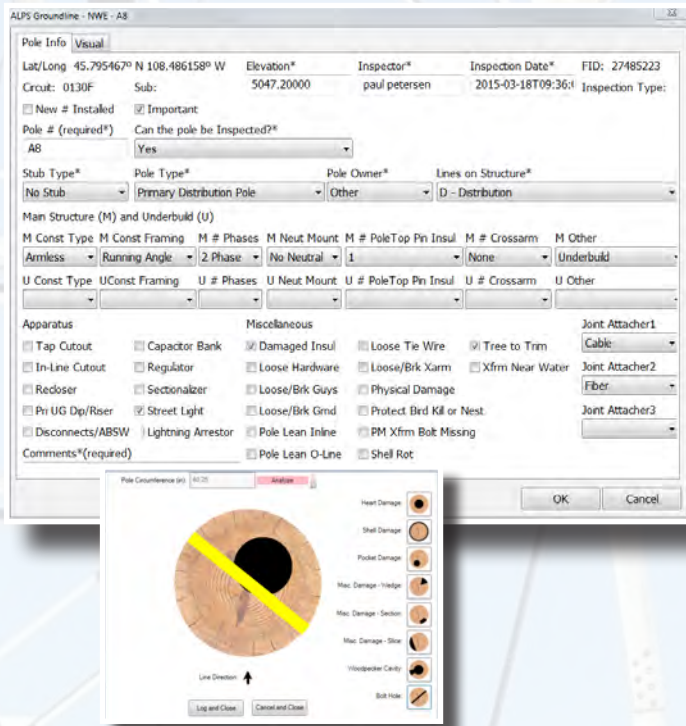
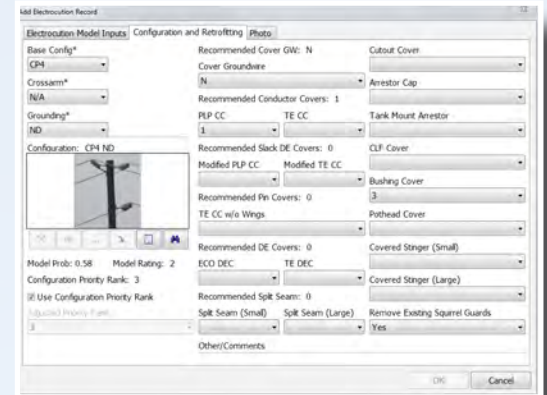


Asset Management, Mapping, Inventory, Environmental Assessment and Inspection Data

- the way you want it

CartoPac Studio: Powerful, robust project configuration tool

- Configure and customize your workflows, no coding needed
- Take complex business requirements and workflows and implement them on field forms
- Control database settings
- Design Forms
- Enforce business rules and compliance requirements...in the field



CartoPac Server: Project deployment and synchronization

- Easy upload and download to CartoPac Tablet
- Web site runs on internal servers or on cloud
- Secure, login and role-based, meets IT requirements
- Users synchronize data, can see others' work
- View field user activity and key metrics

CartoPac Tablet: User-friendly software for field crews

- Download and upload projects and databases from CartoPac Server
- Easy to install, easy to train crews
- Map-based interface, displays aerial photos, reference data, and asset data
- Supports high-accuracy requirements (Trimble, Leica, sub-ft, sub-meter, etc), as well as standard GPS accuracy (NMEA)
- Supports Windows operating systems, Windows Mobile devices, and Windows tablets

CartoPac Workflow Manager: Client-configured workflows to manage field asset data

- View, edit, validate, and approve field asset data as it moves from field to enterprise
- Configure back-end workflows to assure all stakeholders are notified of data status
- Can be automated or manual
- Full audit history can be recorded
- Direct integration with Esri ArcGIS for Server – provides centralized, web map-based platform to browse, view, and edit all incoming field data
- Supports condition-based email notifications

